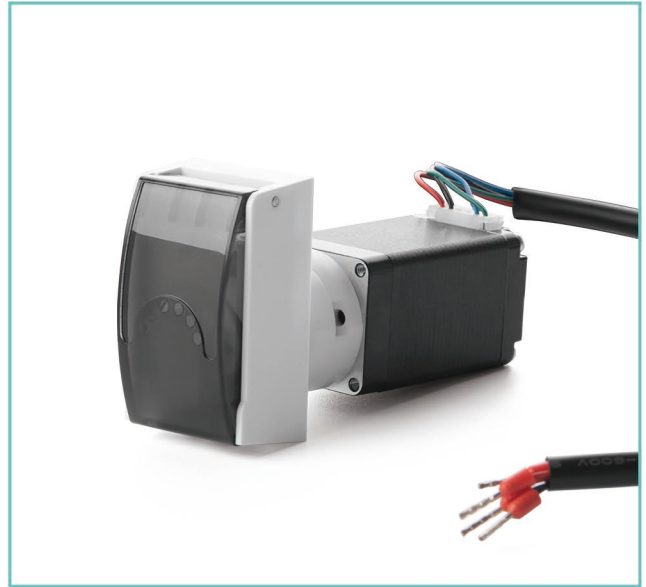
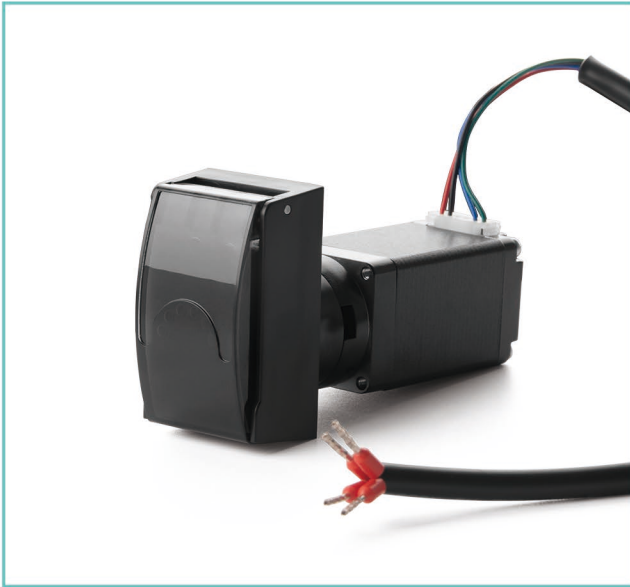


Compact Pump Head

Model No.: OEM-KVB001

Flow Rate :: 0.0010-34.21mL/min



Product Features

KV10 pump head has a small size and available in black and white color options — an ideal OEM solution. Features an elastic upper pressure block that reduces tubing wear and extends service life. The semi-transparent cover allows real-time visual monitoring of pump head and tubing operation. Compatible with various drive types, including stepper and DC motors.

Product Features

- Elastic upper pressure block extends tubing life.
- Semi-transparent cover for easy visual inspection.
- Compact size.

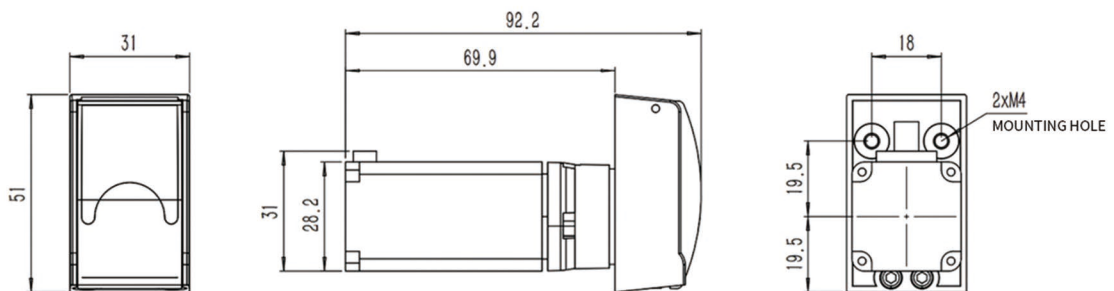
Motor Specification

Speed range	0.1-300rpm
Flow rate range	0.0010-34.21mL/min
Motor type	28 stepper motor
Motor phase number	2
Motor stepping angle	1.8°
Motor phase voltage	4.5V
Motor phase current	1.0A
Operating environment	0-40°C, < 80%RH, non-condensing

Flow Rate

Model	Tubing No.IDxWT (mm)	mL/r	Speed (rpm)	Flow rate range (mL/min)	Weight (Kg)
KV10	1x1	0.030	0.1-300	0.0030-9.05	0.04
	2x1	0.096		0.0096-28.66	
	0.5x0.8	0.010		0.0010-3.0	
	2.4x0.8	0.114		0.0114-34.21	
	1.02x0.86	0.028		0.0028-8.4	
	1.52x0.86	0.052		0.0052-15.6	
	2.06x0.86	0.075		0.0075-22.49	

Dimension Drawing (Unit:mm)



Tubing Installation



1. Lift the protective cover upward to open the pump head.



2. Insert the tubing into the pump head, and secure the tubing connectors into the lower slots.



3. Close the protective cover downward to complete tubing installation.