

Fast Load Pump Head

Model No. : YZ35-II

Flow Rate : 0.69-12000mL/min



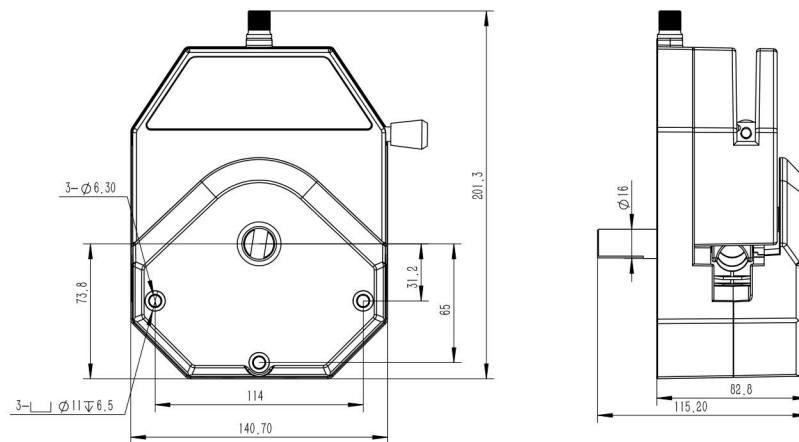
Product Features

- 1.YZ35-II pump head housing is produced with high-pressure die-casting aluminum, ensuring high strength and good consistency.
- 2.Equipped with a standard electromagnetic sensor that outputs a cover-open to stop signal to enable the cover-open to stop function.
- 3.The optimized tubing clamp structure allows for easy installation and removal of the tubing, preventing abnormal damage to the tubing.
- 4.Added a lever limiter to securely fix the lever, preventing loosening due to vibrations.
- 5.304 stainless steel roller assembly, resistant to liquid leakage and corrosion.

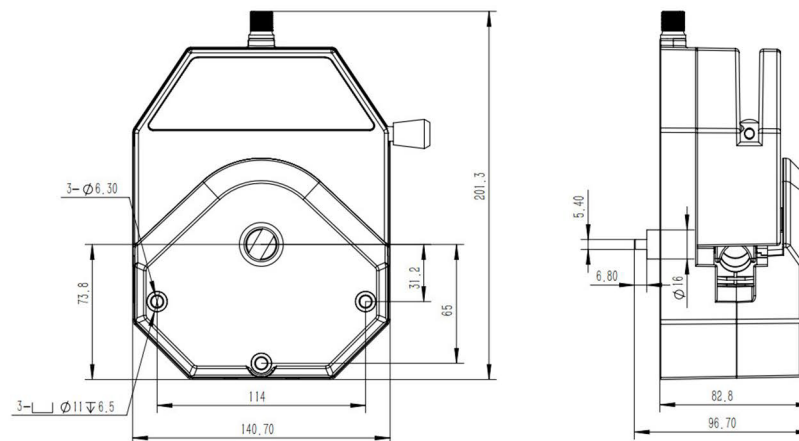
Technical specifications

| Pump Head | Tubing | ID×Wall thickness(mm) | mL/r | (speed0.1-600rpm) Flow Rate(mL/min) | Tubing pressure resistance(Mpa) | | Material | Weight (kg) |
|-----------|-----------------|-----------------------|------|--|---------------------------------|--------------|---------------------|-------------|
| | | | | | Continuous | Intermittent | | |
| YZ35-II | 26 [#] | 6.4x3.3 | 6.9 | 0.69-4200 | 0.27 | 0.2 | Cast aluminum alloy | 2.8 |
| | 73 [#] | 9.6x3.3 | 12.3 | 1.23~7400 | 0.27 | 0.2 | | |
| | 82 [#] | 12.7x3.3 | 20 | 2~12000 | 0.14 | 0.1 | | |

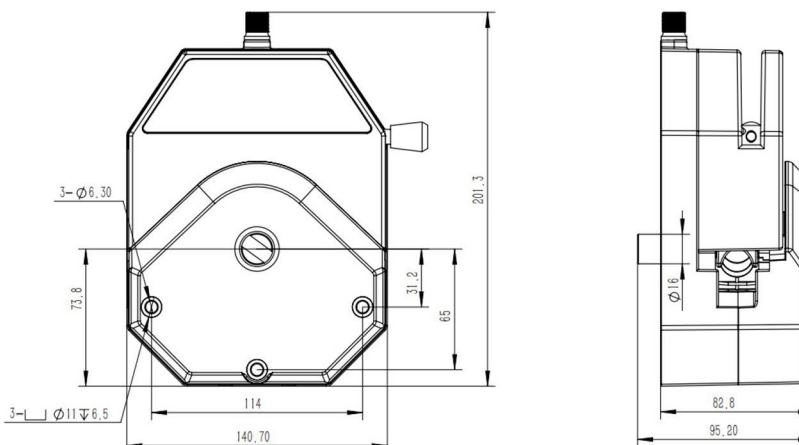
Dimension Drawing (Unit:mm)



YZ35-II (Round Shaft)



YZ35-II (Flat Shaft)



YZ35-II (Short Round Shaft)